

# **Monitoring and Controlling Process Group Artifacts**

## 5.5 Validate Scope

### 5.5.1 Requirement Documentation (Input)

PMGT 690, ERAU, Prof. Sherman

By: Matthew Holtan

**5.5.1 Requirement Documentation (Input):** This artifact was taken from a homework assignment from PMGT 501. Requirement documentation lists all the project, product, and other types of requirements for the project along with their acceptance criteria (PMI, 2013). The main intent from this homework assignment was to develop a WBS, however in order to do that, the project teams need to list the deliverables (requirements) and come up with a statement of work. These two items are needed to build off one another. These requirements are a necessary inputs to Validate the Scope.

This problem is to develop a WBS for a local stage play. The first step is to define the objective or the **scope of work**. This project has 4 months before opening night. The total cost is to not exceed \$5,000.

Deliverables:

- 3 hour play for 4 straight nights
- Construction of 3 major sets
- Approved facility: proper sound system, lighting and seating
- Vendors and local sponsors

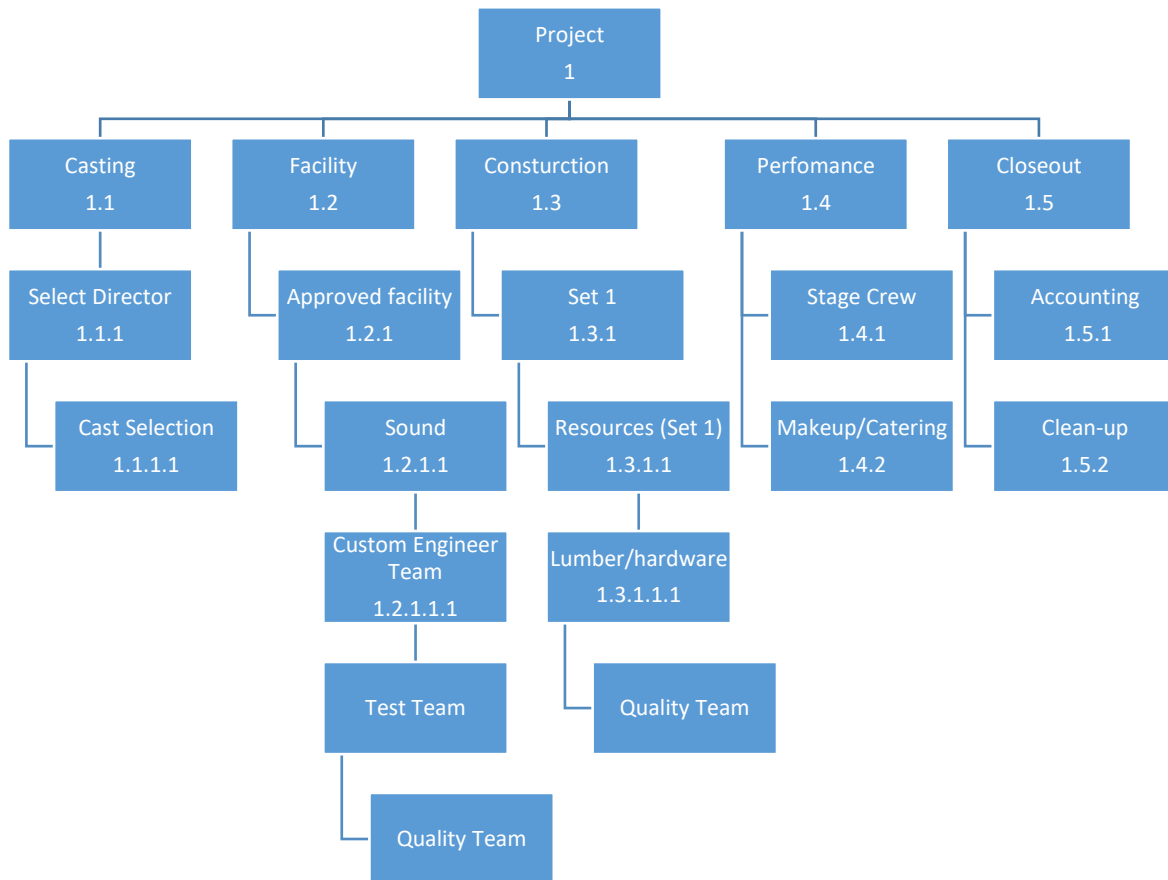
Milestones/teams:

- Secure approved facility: Day 1
- Funding approved: Day 1
- Contact director/select cast: Apr 10
- Construction of sets: June 1
- Contact catering company: Apr 10

Play: Jul 1

Clean up: Jul 5

## WBS tree structure



Work package 1.3.1.1.1, is a unit with a set start/stop time and has an exact value associated with it. With this particular WBS, you can get an accurate cost estimate from decomposing to level 4.

The organizational breakdown structure (OBS) would be the separate teams to follow up with the hired sound team. They would test and follow up with quality assurance. There would be OBS with the construction of the set as well. Making sure individuals are not violating building codes and also the maintenance teams are certified and working in safe conditions.